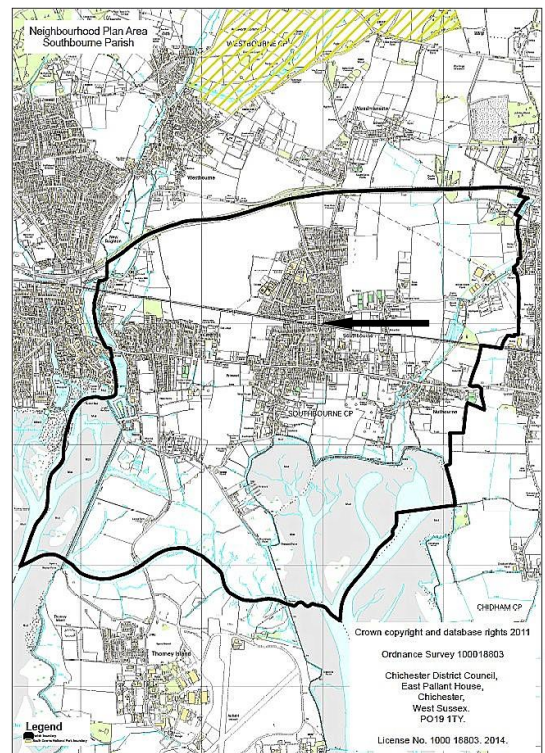


Nominate a Heritage Asset

Southbourne Parish Neighbourhood Plan Pre-Submission Modified plan 2014-2029
Local Heritage Assets (SB9.EV6)

(September 2022)

No 13 New Building in Signal Box style – Stein Road, Southbourne, PO10 8LW (located north of crossing gates)



Nominate a Heritage Asset

1. WHAT IS IT? Is it one of the following?	Tick
a building or group of buildings	√
a monument or site (an area of archaeological remains or a structure other than a building)	
a place (e.g. a street, park, garden or natural space)	
a landscape (an area defined by visual features or character, e.g. a city centre, village, suburb or field system)	

2. WHY IS IT INTERESTING? Is it interesting in any of the following ways?	Tick / Rank
Historic interest – a well documented association with a person, event, episode of history, or local industry	
Archaeological interest – firm evidence of potential to reveal more about the human past through further study	
Architectural interest – an example of an architectural style, a building of particular use, a technique of building, or use of materials	√
Artistic interest – It includes artistic endeavour to communicate meaning or use of design (including landscape design) to enhance appearance	
What is it about the asset that provides this interest? The original signal box was demolished some years ago. The new building was permitted in 2004 and built on the opposite side of the level crossing. It was carefully designed to reflect its proximity to the railway station. Southbourne was a village reliant on agriculture and through traffic on the Main Road (A259) until the railway was constructed in 1847. Thereafter, it expanded due to “Southbourne Halt” and the wider connections that the railway brought and was soon sufficiently prosperous to have its own church (built by public subscription) and Parochial Church Council.	

3. WHY IS IT LOCALLY VALUED? Is the interest of the asset valued locally for any of the following reasons?	Tick / Rank
Association: It connects us to people and events that shaped the identity or character of the area	√ 2
Illustration: It illustrates an aspect of the area's past that makes an important contribution to its identity or character	
Evidence: It is an important resource for understanding and learning about the area's history	
Aesthetics: It makes an important contribution to the positive look of the area either by design or fortuitously	√ 1
Communal: It is important to the identity, cohesion, spiritual life or memory of all or part of the community	
How is the asset locally valued as heritage? This building reflects the importance of the railway line and the station as part of Southbourne's heritage.	

4. WHAT MAKES ITS LOCAL SIGNIFICANCE SPECIAL? Do any of the following features make the heritage significance of the asset stand out above the surrounding environment?	Tick
Age ... Is it particularly old, or of a date that is significant to the local area?	
Rarity ... Is it unusual in the area or a rare survival of something that was once common?	√ 2
Integrity ... Is it largely complete or in a near to original condition?	
Group value ... Is it part of a group that have a close historic, aesthetic or communal association?	
Southbourne's identity ... Is it important to the identity or character of the city or a particular part of it? How does this contribute to its value? Significant structure which hasn't changed.	√ 1