

Nominate a Heritage Asset

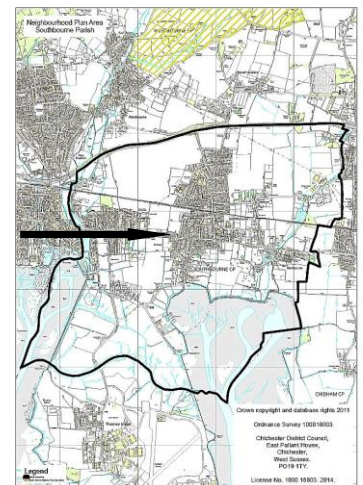
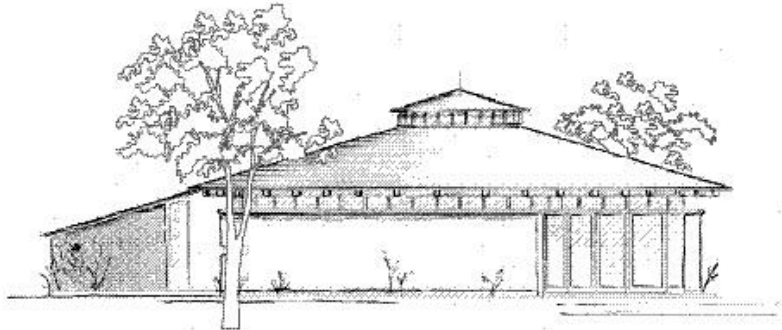
Southbourne Parish Neighbourhood Plan Pre-Submission Modified Plan 2014-2029

Local Heritage Assets

(SB9.EV6)

(September 2022)

No. 16 Tuppeny Barn, Main Road Southbourne, PO10 8EZ



Tuppeny Barn is a charity established on this site in 2005. It is dedicated to the cultivation and harvesting of organic produce, using this to create learning experiences for all ages and to promote the benefits of growing, cooking and eating healthy food. From hosting school trips and after-school clubs, to workshops and holiday activities, children are taught where fruit and vegetables come from, the benefits of eating nutritional food, and they practice the skills to grow and prepare their own meals. It also provides educational experiences and activities for the wider community, to help people develop their growing and cooking abilities, alongside countryside skills like foraging, wreath making and willow weaving.

The Education Centre has been designed with sustainable principles at its heart and provides a beautiful space for community events. This building was completed in 2015 with 90% of the materials used sourced within 20 miles. Shredded tyres are incorporated in the foundations, the straw bale construction provides insulation and it has a shingle roof. It utilises grey water recycling, and waste separation and recycling. It is an innovative and successful example of sustainable construction which deserves recognition.

Nominate a Heritage Asset

1. WHAT IS IT? Is it one of the following?	Tick
a building or group of buildings	√
a monument or site (an area of archaeological remains or a structure other than a building)	
a place (e.g. a street, park, garden or natural space)	
a landscape (an area defined by visual features or character, e.g. a city centre, village, suburb or field system)	

2. WHY IS IT INTERESTING? Is it interesting in any of the following ways?	Tick / Rank
Historic interest – a well documented association with a person, event, episode of history, or local industry	
Archaeological interest – firm evidence of potential to reveal more about the human past through further study	
Architectural interest – an example of an architectural style, a building of particular use, a technique of building, or use of materials	√
Artistic interest – It includes artistic endeavour to communicate meaning or use of design (including landscape design) to enhance appearance	
What is it about the asset that provides this interest? The rotunda design is an aesthetic success and provides a cutting edge example of how a sustainable building can be both practical and pleasing to look at. The interior with its wooden beams and floors is light and contemporary, and provides an attractive space for concerts, exhibitions, educational and social events.	

3. WHY IS IT LOCALLY VALUED? Is the interest of the asset valued locally for any of the following reasons?	Tick / Rank
Association: It connects us to people and events that shaped the identity or character of the area	√ 2
Illustration: It illustrates an aspect of the area's past that makes an important contribution to its identity or character	
Evidence: It is an important resource for understanding and learning about the area's history	
Aesthetics: It makes an important contribution to the positive look of the area either by design or fortuitously	
Communal: It is important to the identity, cohesion, spiritual life or memory of all or part of the community	√ 1
How is the asset locally valued as heritage? The building is the focus for the celebration of traditional organic methods of cultivation long used in this area. The centre teaches how to employ them eg in the orchard and vegetable plots. The building and the activities within it have quickly become part of Southbourne's community network, although it is now well known much further afield.	

4. WHAT MAKES ITS LOCAL SIGNIFICANCE SPECIAL? Do any of the following features make the heritage significance of the asset stand out above the surrounding environment?	Tick
Age ... Is it particularly old, or of a date that is significant to the local area?	
Rarity ... Is it unusual in the area or a rare survival of something that was once common?	
Integrity ... Is it largely complete or in a near to original condition?	
Group value ... Is it part of a group that have a close historic, aesthetic or communal association?	
Southbourne's identity ... Is it important to the identity or character of the city or a particular part of it? How does this contribute to its value? The charity has become a focus for many local environmental activities and organisations by hosting events, bringing experts to share their knowledge with local people, and leading by example.	√