

Nominate a Heritage Asset

Southbourne Parish Neighbourhood Plan Pre-Submission Modified Plan 2014-2029 Local Heritage Assets (SB9.EV6)

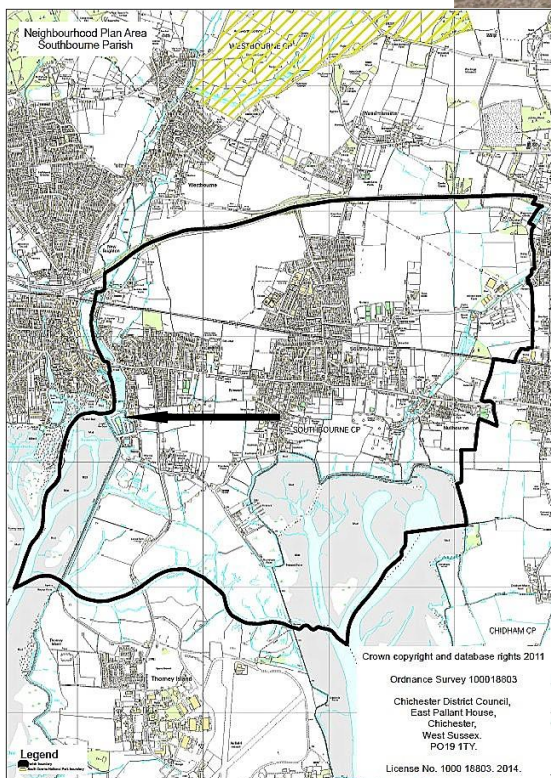
(September 2022)

No. 18 Slipper Mill (now numbers 1, 2, 3, 4), Slipper Road, PO10 8XD

The original Slipper Mill was built by Thomas Hendy in the 1760s. By the middle of The C19 it was one of four operating flour mills in the locality. Lumley Mill (Listed Grade II) being the other one in Southbourne Parish. Slipper Mill was tidal, and the tidal gates and sluice remain in good repair due to the work of the Slipper Mill Pond Preservation Association. The remaining building was the store, which was built in 1912 and converted to residential use in 1970. This is an important building in the historical context of the local flour milling industry. It is also visually significant due to its location when viewed in association with the Slipper Mill Pond and the nearby tidal gates and sluice.



Slipper Mill converted to flats



Nominate a Heritage Asset

1. WHAT IS IT? Is it one of the following?	Tick
a building or group of buildings	√
a monument or site (an area of archaeological remains or a structure other than a building)	
a place (e.g. a street, park, garden or natural space)	
a landscape (an area defined by visual features or character, e.g. a city centre, village, suburb or field system)	

2. WHY IS IT INTERESTING? Is it interesting in any of the following ways?	Tick / Rank
Historic interest – a well documented association with a person, event, episode of history, or local industry	√
Archaeological interest – firm evidence of potential to reveal more about the human past through further study	
Architectural interest – an example of an architectural style, a building of particular use, a technique of building, or use of materials	
Artistic interest – It includes artistic endeavour to communicate meaning or use of design (including landscape design) to enhance appearance	
What is it about the asset that provides this interest? The building is part of the historic context set by the associated Slipper Mill Pond and the sluices, all of which bear witness to the importance of the flour milling industry locally.	

3. WHY IS IT LOCALLY VALUED? Is the interest of the asset valued locally for any of the following reasons?	Tick / Rank
Association: It connects us to people and events that shaped the identity or character of the area	√ 2
Illustration: It illustrates an aspect of the area's past that makes an important contribution to its identity or character	√ 1
Evidence: It is an important resource for understanding and learning about the area's history	
Aesthetics: It makes an important contribution to the positive look of the area either by design or fortuitously	√ 3
Communal: It is important to the identity, cohesion, spiritual life or memory of all or part of the community	
How is the asset locally valued as heritage? This is the only remaining part of the original Mill complex of buildings, which appears to have been substantial. Nevertheless, it is an important contribution to the historic context of the locality.	

4. WHAT MAKES ITS LOCAL SIGNIFICANCE SPECIAL? Do any of the following features make the heritage significance of the asset stand out above the surrounding environment?	Tick
Age ... Is it particularly old, or of a date that is significant to the local area?	
Rarity ... Is it unusual in the area or a rare survival of something that was once common?	
Integrity ... Is it largely complete or in a near to original condition?	
Group value ... Is it part of a group that have a close historic, aesthetic or communal association?	√
Southbourne's identity ... Is it important to the identity or character of the city or a particular part of it? How does this contribute to its value? Significant structure which hasn't changed. The original function of the building remains easy to see due to sympathetic residential conversion.	