

Nominate a Heritage Asset

Southbourne Parish Neighbourhood Plan Pre-Submission Modified Plan 2014-2029

Local Heritage Assets (SB9.EV6)

(September 2022)

No 1 The Stables, Eames Farm, Thorney Road, PO10 8DE

Conversion of a dilapidated and redundant barn into an education resource centre with support office for the Chichester Harbour Conservancy, plus an additional office and store for commercial rent. The overriding design principle was to preserve the rural and agricultural character of the existing barn, whilst securing the building fabric and making necessary changes to accommodate its new use. To this end, new openings were restricted to just one new window on the NE elevation and the reinstatement of a blocked up opening on the SW elevation. Perhaps more importantly, the major barn opening on the NW elevation, previously infilled with a door, fletton brickwork and window was reinstated as a large glazed opening with external sliding screens.

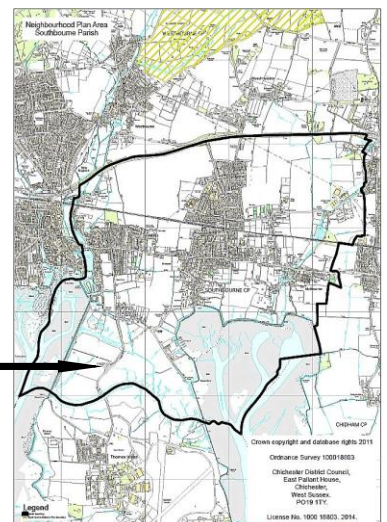
The existing internal wall finish of cobbled flintwork was considered an important component of the buildings character and it was agreed with Building Control that the walls to the main barn could remain uninsulated to preserve the quality of the space. All other walls were dri-lined to bring the fabric up to current thermal standards. In a similar vein, internal finishes such as the concrete floor were chosen to



give a robust, non domestic appearance that would retain the character of the building. Landscaping to the courtyard was limited to a simple raised planter with a single hazel tree to soften and provide a focus to the courtyard and provide much needed shade to visitors in the summer months.

Winner of the Sussex

Heritage Trust Public and Community Award 2013 as
"A fine example of a restored, new use, barn in a beautiful setting".



Nominate a Heritage Asset

1. WHAT IS IT? Is it one of the following?	Tick
a building or group of buildings	√
a monument or site (an area of archaeological remains or a structure other than a building)	
a place (e.g. a street, park, garden or natural space)	
a landscape (an area defined by visual features or character, e.g. a city centre, village, suburb or field system)	

2. WHY IS IT INTERESTING? Is it interesting in any of the following ways?	Tick / Rank
Historic interest – a well documented association with a person, event, episode of history, or local industry	
Archaeological interest – firm evidence of potential to reveal more about the human past through further study	
Architectural interest – an example of an architectural style, a building of particular use, a technique of building, or use of materials	√
Artistic interest – It includes artistic endeavour to communicate meaning or use of design (including landscape design) to enhance appearance	
What is it about the asset that provides this interest? An award winning conversion that retains most of the original historic features. Its relatively remote rural setting among open fields remains unchanged and is integral to its character. Its ambience benefits from dark skies above.	

3. WHY IS IT LOCALLY VALUED? Is the interest of the asset valued locally for any of the following reasons?	Tick / Rank
Association: It connects us to people and events that shaped the identity or character of the area	
Illustration: It illustrates an aspect of the area's past that makes an important contribution to its identity or character	√ 1
Evidence: It is an important resource for understanding and learning about the area's history	
Aesthetics: It makes an important contribution to the positive look of the area either by design or fortuitously	√ 2
Communal: It is important to the identity, cohesion, spiritual life or memory of all or part of the community	
How is the asset locally valued as heritage? Building administered by the Chichester Harbour Conservancy providing an excellent meeting room of local historic character for educational and community use.	

4. WHAT MAKES ITS LOCAL SIGNIFICANCE SPECIAL? Do any of the following features make the heritage significance of the asset stand out above the surrounding environment?	Tick
Age ... Is it particularly old, or of a date that is significant to the local area?	
Rarity ... Is it unusual in the area or a rare survival of something that was once common?	
Integrity ... Is it largely complete or in a near to original condition?	√
Group value ... Is it part of a group that have a close historic, aesthetic or communal association?	
Southbourne's identity ... Is it important to the identity or character of the city or a particular part of it? How does this contribute to its value? This type of building was once common locally, but few are now in good repair. It provides a popular local venue for talks (eg local conservation groups)..	