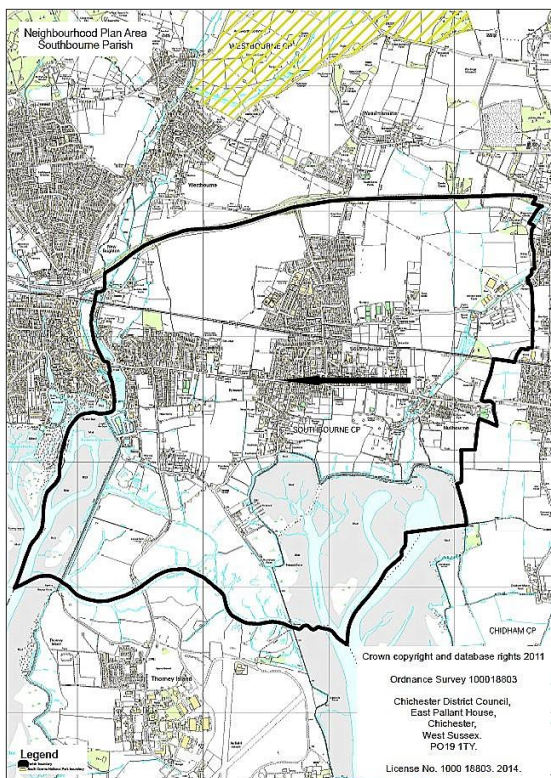


Nominate a Heritage Asset

Southbourne Parish Neighbourhood Plan Pre-Submission Modified Plan 2014-2029
Local Heritage Assets (SB9.EV6)

(September 2022)

No.10 Padwick House and Padwick Villas, (nos. 237, 239, 241, 243), Main Road, Southbourne, PO10 8JD



Nominate a Heritage Asset

1. WHAT IS IT? Is it one of the following?	Tick
a building or group of buildings	√
a monument or site (an area of archaeological remains or a structure other than a building)	
a place (e.g. a street, park, garden or natural space)	
a landscape (an area defined by visual features or character, e.g. a city centre, village, suburb or field system)	

2. WHY IS IT INTERESTING? Is it interesting in any of the following ways?	Tick / Rank
Historic interest – a well documented association with a person, event, episode of history, or local industry	√ 1
Archaeological interest – firm evidence of potential to reveal more about the human past through further study	
Architectural interest – an example of an architectural style, a building of particular use, a technique of building, or use of materials	√ 2
Artistic interest – It includes artistic endeavour to communicate meaning or use of design (including landscape design) to enhance appearance	
What is it about the asset that provides this interest? Mrs Lynn's shop (now Padwick House No. 237) is shown on the left of the photo (c1907). This later became a cobblers which before WW2 was run by Mr Broomfield and after by his son Dick. The shop was still there in the 1928 directory but a Mr H Bowles was the occupant and the property was named Padwick Shop. Next door, Nos. 239, 241, and 243 are Padwick Villas. All the buildings are now residential. The architecture is typical of turn of the century local shops, as is their progression from small local shops to residential use.	

3. WHY IS IT LOCALLY VALUED? Is the interest of the asset valued locally for any of the following reasons?	Tick / Rank
Association: It connects us to people and events that shaped the identity or character of the area	√ 1
Illustration: It illustrates an aspect of the area's past that makes an important contribution to its identity or character	
Evidence: It is an important resource for understanding and learning about the area's history	√ 2
Aesthetics: It makes an important contribution to the positive look of the area either by design or fortuitously	
Communal: It is important to the identity, cohesion, spiritual life or memory of all or part of the community	
How is the asset locally valued as heritage? This is one of the few retail properties where the owners and uses are well documented. It demonstrates the importance of the Main Road for trading, still evident today.	

4. WHAT MAKES ITS LOCAL SIGNIFICANCE SPECIAL? Do any of the following features make the heritage significance of the asset stand out above the surrounding environment?	Tick
Age ... Is it particularly old, or of a date that is significant to the local area?	
Rarity ... Is it unusual in the area or a rare survival of something that was once common?	
Integrity ... Is it largely complete or in a near to original condition?	√ 2
Group value ... Is it part of a group that have a close historic, aesthetic or communal association?	√ 1
Southbourne's identity ... Is it important to the identity or character of the city or a particular part of it? How does this contribute to its value? The structures remain largely unchanged, and with the exception of Padwick House, the former shop windows have been incorporated into the residential conversions.	