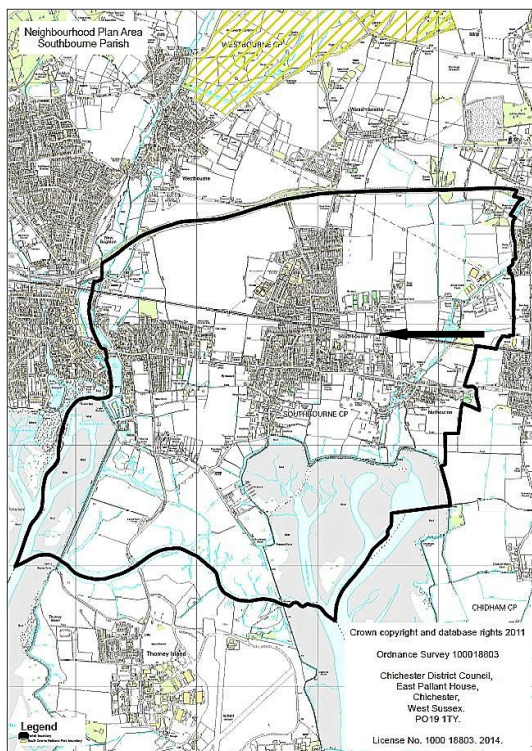


## Nominate a Heritage Asset

Southbourne Parish Neighbourhood Plan Pre-Submission Modified Plan 2014-2029  
Local Heritage Assets (SB9.EV6)

(September 2022)

No. 11 Signalman's Cottage (now named Gate House), Inlands Road, Nutbourne, PO18 8RJ



The West Coastway line came through Southbourne in 1847. The signalman's cottage was built by the London, Brighton and South Coast Railway as was the cottage in Stein Road, Southbourne.

## Nominate a Heritage Asset

1. <b>WHAT IS IT?</b> Is it one of the following?	Tick
a <b>building or group of buildings</b>	√
a <b>monument or site (an area of archaeological remains or a structure other than a building)</b>	
a <b>place (e.g. a street, park, garden or natural space)</b>	
a <b>landscape (an area defined by visual features or character, e.g. a city centre, village, suburb or field system)</b>	

2. <b>WHY IS IT INTERESTING?</b> Is it interesting in any of the following ways?	Tick / Rank
<b>Historic interest</b> – a well documented association with a person, event, episode of history, or local industry	
<b>Archaeological interest</b> – firm evidence of potential to reveal more about the human past through further study	
<b>Architectural interest</b> – an example of an architectural style, a building of particular use, a technique of building, or use of materials	√
<b>Artistic interest</b> – It includes artistic endeavour to communicate meaning or use of design (including landscape design) to enhance appearance	
What is it about the asset that provides this interest? <b>It is a good example of a railway cottage, originally occupied by the level crossing keeper, but with pad operated gates local control is no longer needed. It has been converted to a private residential property.</b>	

3. <b>WHY IS IT LOCALLY VALUED?</b> Is the interest of the asset <b>valued locally</b> for any of the following reasons?	Tick / Rank
<b>Association:</b> It connects us to people and events that shaped the identity or character of the area	√ 2
<b>Illustration:</b> It illustrates an aspect of the area's past that makes an important contribution to its identity or character	√ 1
<b>Evidence:</b> It is an important resource for understanding and learning about the area's history	
<b>Aesthetics:</b> It makes an important contribution to the positive look of the area either by design or fortuitously	
<b>Communal:</b> It is important to the identity, cohesion, spiritual life or memory of all or part of the community	
How is the asset locally valued as heritage? <b>Southbourne was a village reliant on agriculture and through traffic on the Main Road (A259) until the railway was constructed in 1847. Thereafter, it expanded due to "Southbourne Halt" and the wider connections that the railway brought and was soon sufficiently prosperous to have its own church (built by public subscription) and Parochial Church Council.</b>	

4. <b>WHAT MAKES ITS LOCAL SIGNIFICANCE SPECIAL?</b> Do any of the following features make the heritage significance of the asset stand out above the surrounding environment?	Tick
<b>Age</b> ... Is it particularly old, or of a date that is significant to the local area?	
<b>Rarity</b> ... Is it unusual in the area or a rare survival of something that was once common?	
<b>Integrity</b> ... Is it largely complete or in a near to original condition?	√ 2
<b>Group value</b> ... Is it part of a group that have a close historic, aesthetic or communal association?	
<b>Southbourne's identity</b> ... Is it important to the identity or character of the city or a particular part of it? How does this contribute to its value? <b>The property has changed little since its construction and is evidence of Southbourne's strong and historic railway connection.</b>	√ 1