

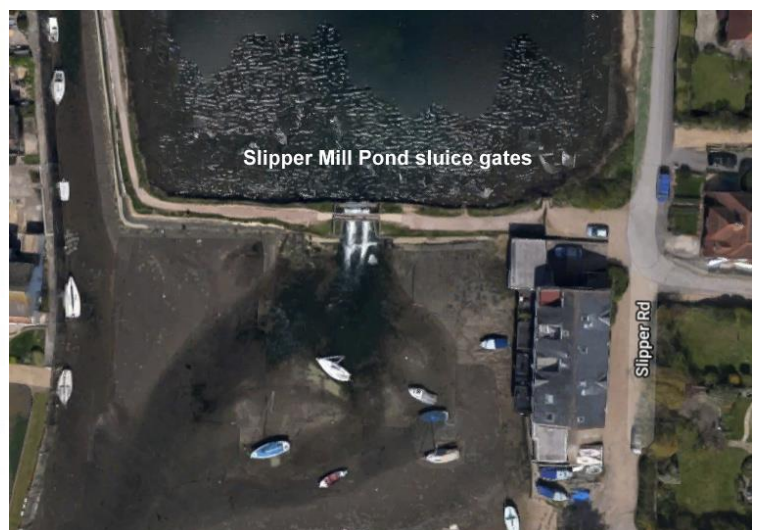
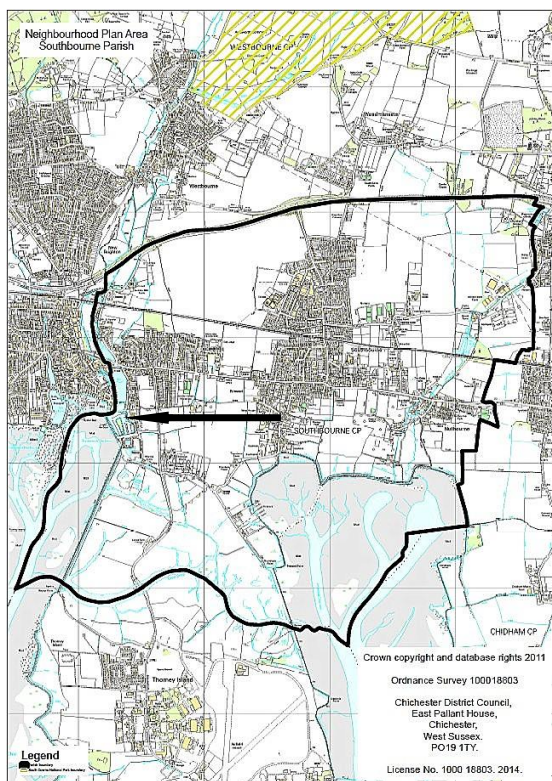
Nominate a Heritage Asset

Southbourne Parish Neighbourhood Plan
Local Heritage Assets (SB9.EV6)

Pre-Submission Modified Plan 2014-2029

(September 2022)

No 12 Slipper Tidal Gates and Sluice, Slipper Road, PO10 8XD



Nominate a Heritage Asset

1. WHAT IS IT? Is it one of the following?	Tick
a building or group of buildings	
a monument or site (an area of archaeological remains or a structure other than a building)	√
a place (e.g. a street, park, garden or natural space)	
a landscape (an area defined by visual features or character, e.g. a city centre, village, suburb or field system)	

2. WHY IS IT INTERESTING? Is it interesting in any of the following ways?	Tick / Rank
Historic interest – a well documented association with a person, event, episode of history, or local industry	√
Archaeological interest – firm evidence of potential to reveal more about the human past through further study	
Architectural interest – an example of an architectural style, a building of particular use, a technique of building, or use of materials	
Artistic interest – It includes artistic endeavour to communicate meaning or use of design (including landscape design) to enhance appearance	
What is it about the asset that provides this interest? Local mills have played a significant part in the history of Emsworth and Southbourne. Converted mill buildings and the millponds are the remains of a thriving flour industry which secured lucrative contracts, especially during the early part of the C19, for the manufacture of ships' biscuit for the Navy. Slipper mill pond and the gates that control the flow of water, are a significant historic, amenity and environmental feature of this border area which straddles Hampshire and West Sussex. Technically these are Tidal Gates. They open when the pond is lower than tide level for use by the now defunct mill and, being kept in working order, still function. The functional sluice gate itself is to the west.	

3. WHY IS IT LOCALLY VALUED? Is the interest of the asset valued locally for any of the following reasons?	Tick / Rank
Association: It connects us to people and events that shaped the identity or character of the area	√ 2
Illustration: It illustrates an aspect of the area's past that makes an important contribution to its identity or character	
Evidence: It is an important resource for understanding and learning about the area's history	√ 1
Aesthetics: It makes an important contribution to the positive look of the area either by design or fortuitously	
Communal: It is important to the identity, cohesion, spiritual life or memory of all or part of the community	
How is the asset locally valued as heritage? The historic, and practical, importance of the gates has been recognised locally and the Slipper Mill Pond Preservation Association has undertaken considerable restoration and maintenance in recent years.	

4. WHAT MAKES ITS LOCAL SIGNIFICANCE SPECIAL? Do any of the following features make the heritage significance of the asset stand out above the surrounding environment?	Tick
Age ... Is it particularly old, or of a date that is significant to the local area?	
Rarity ... Is it unusual in the area or a rare survival of something that was once common?	
Integrity ... Is it largely complete or in a near to original condition?	√ 2
Group value ... Is it part of a group that have a close historic, aesthetic or communal association?	
Southbourne's identity ... Is it important to the identity or character of the city or a particular part of it? How does this contribute to its value? Significant structure which is largely unchanged	√ 1