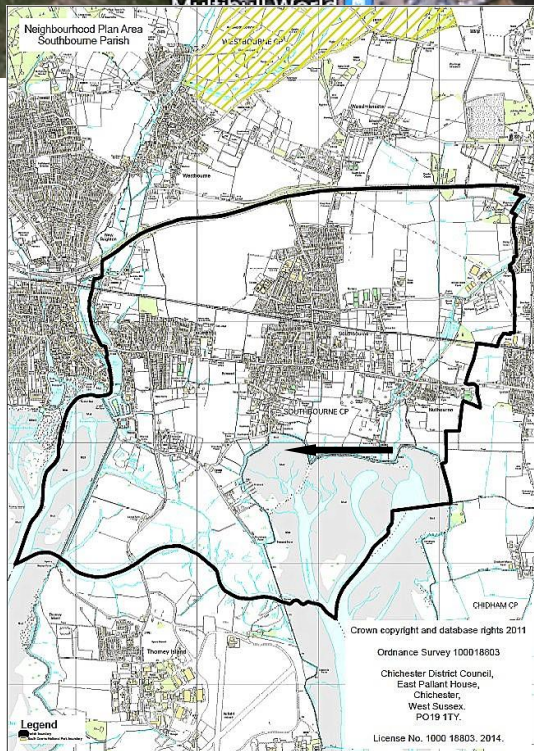


Nominate a Heritage Asset

Southbourne Parish Neighbourhood Plan Pre-Submission Modified Plan 2014-2029
Local Heritage Assets (SB9.EV6) (September 2022)

No 21 Prinsted Oyster Beds, Prinsted Basin, Prinsted, PO10 8HS



Prinsted Oyster Beds, can be seen at low tide. The oyster industry was short lived. Despite the considerable effort involved in creating the beds the enterprise was abandoned, it is thought, shortly after 1902 when the Dean of Winchester is said to have died after eating oysters from Emsworth which were contaminated with typhoid. Typhoid also led to the closure of local wells in Prinsted during the early part of the C19.

Nevertheless, the outline of the beds and the bar that protected them can be seen clearly at low tide, and the route the beds define is one of the few relatively safe ways of crossing the dangerous mud in the Prinsted Basin to reach the bar across the Thorney Channel (not recommended).

Nominate a Heritage Asset

1. WHAT IS IT? Is it one of the following?	Tick
a building or group of buildings	
a monument or site (an area of archaeological remains or a structure other than a building)	√
a place (e.g. a street, park, garden or natural space)	
a landscape (an area defined by visual features or character, e.g. a city centre, village, suburb or field system)	

2. WHY IS IT INTERESTING? Is it interesting in any of the following ways?	Tick / Rank
Historic interest – a well documented association with a person, event, episode of history, or local industry	√
Archaeological interest – firm evidence of potential to reveal more about the human past through further study	
Architectural interest – an example of an architectural style, a building of particular use, a technique of building, or use of materials	
Artistic interest – It includes artistic endeavour to communicate meaning or use of design (including landscape design) to enhance appearance	
What is it about the asset that provides this interest? The historic link with the local oyster industry and the death of the Dean of Winchester.	

3. WHY IS IT LOCALLY VALUED? Is the interest of the asset valued locally for any of the following reasons?	Tick / Rank
Association: It connects us to people and events that shaped the identity or character of the area	√ 2
Illustration: It illustrates an aspect of the area's past that makes an important contribution to its identity or character	
Evidence: It is an important resource for understanding and learning about the area's history	√ 1
Aesthetics: It makes an important contribution to the positive look of the area either by design or fortuitously	√ 3
Communal: It is important to the identity, cohesion, spiritual life or memory of all or part of the community	
How is the asset locally valued as heritage? A structure that can be seen at low tide which invites questions as to its origin.	

4. WHAT MAKES ITS LOCAL SIGNIFICANCE SPECIAL? Do any of the following features make the heritage significance of the asset stand out above the surrounding environment?	Tick
Age ... Is it particularly old, or of a date that is significant to the local area?	
Rarity ... Is it unusual in the area or a rare survival of something that was once common?	
Integrity ... Is it largely complete or in a near to original condition?	
Group value ... Is it part of a group that have a close historic, aesthetic or communal association?	
Southbourne's identity ... Is it important to the identity or character of the city or a particular part of it? How does this contribute to its value? Significant structure which hasn't changed. While the structures creating the old beds have diminished, the outlines of the old beds are clearly visible even after more than 100 years of tidal action.	√