

Nominate a Heritage Asset

Southbourne Parish Neighbourhood Plan
Local Heritage Assets (SB9.EV6)

Pre-Submission Modified Plan 2014-2029
(September 2022)

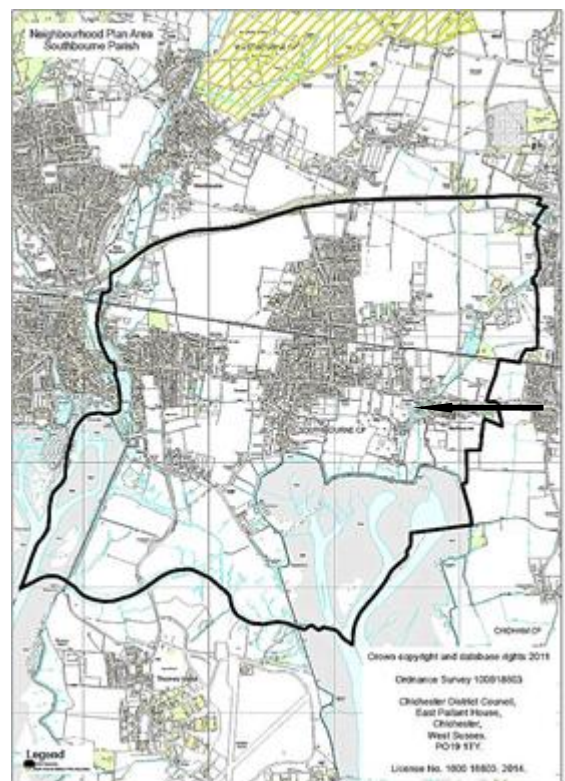
No 4 Nutbourne Tidal Mill (remains), Farm Lane, Nutbourne, PO10 8SA



Nutbourne Tidal Mill, ©1830.
Arthur Miller, born Nutbourne
Mill Cottage 1852, died
Minneapolis USA 1933, was at the
mill for some time.
This picture is courtesy of
Charlotte Forsythe from an
original water colour which hangs
in the family home in Minneapolis.

From Medieval times to the 1900s there was a mill at Nutbourne, with a quay. Ships would call to collect goods. In the 1870s there was an attempt to reclaim land from the sea, so that it could be farmed. The wooden posts that are left form the small Islands, called North and South Stakes. In 1975 Nutbourne Marshes were bought by Chichester Harbour Education to create a nature reserve.
(www.conservancy.co.uk)

All that
remained of
Nutbourne Tidal
Mill in 2007



Nominate a Heritage Asset

Is it one of the following? a building or group of buildings	
a monument or site (an area of archaeological remains or a structure other than a building)	√
a place (e.g. a street, park, garden or natural space)	
a landscape (an area defined by visual features or character, e.g. a city centre, village, suburb or field system)	

2. WHY IS IT INTERESTING? Is it interesting in any of the following ways?	Tick / Rank
Historic interest – a well documented association with a person, event, episode of history, or local industry	√
Archaeological interest – firm evidence of potential to reveal more about the human past through further study	
Architectural interest – an example of an architectural style, a building of particular use, a technique of building, or use of materials	
Artistic interest – It includes artistic endeavour to communicate meaning or use of design (including landscape design) to enhance appearance	
What is it about the asset that provides this interest? All that remains of a substantial building constructed about 1830.	

3. WHY IS IT LOCALLY VALUED? Is the interest of the asset valued locally for any of the following reasons?	Tick / Rank
Association: It connects us to people and events that shaped the identity or character of the area	√ 1
Illustration: It illustrates an aspect of the area's past that makes an important contribution to its identity or character	√ 2
Evidence: It is an important resource for understanding and learning about the area's history	
Aesthetics: It makes an important contribution to the positive look of the area either by design or fortuitously	
Communal: It is important to the identity, cohesion, spiritual life or memory of all or part of the community	
How is the asset locally valued as heritage? The remains are a marker and relate to the Mill Pond that, although now dry, remains a feature of the area.	

4. WHAT MAKES ITS LOCAL SIGNIFICANCE SPECIAL? Do any of the following features make the heritage significance of the asset stand out above the surrounding environment?	Tick
Age ... Is it particularly old, or of a date that is significant to the local area?	√ 2
Rarity ... Is it unusual in the area or a rare survival of something that was once common?	
Integrity ... Is it largely complete or in a near to original condition?	
Group value ... Is it part of a group that have a close historic, aesthetic or communal association?	
Southbourne's identity ... Is it important to the identity or character of the city or a particular part of it? How does this contribute to its value? Nutbourne Tidal Mill was a significant structure which played a major part in the local industry of the area. There were a number of large mills locally (eg Lumley Mill - see the Lumley Character Appraisal) in Southbourne Parish, and at least two in Emsworth.	√ 1