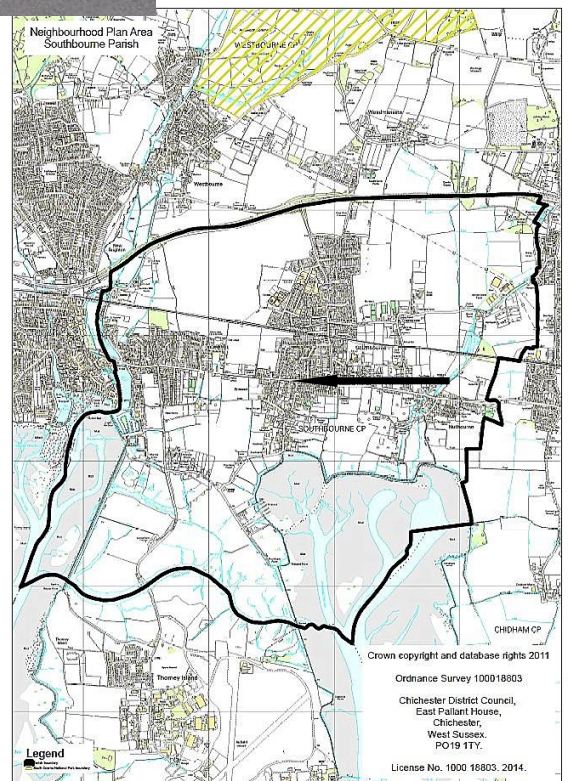


Nominate a Heritage Asset

Southbourne Parish Neighbourhood Plan Pre-Submission Modified Plan 2014-2029
Local Heritage Assets (SB9.EV6)

(September 2022)

No 5 The Forge, 250 Main Road, Southbourne, PO10 8JJ



Nominate a Heritage Asset

1. WHAT IS IT? Is it one of the following?	Tick
a building or group of buildings	√
a monument or site (an area of archaeological remains or a structure other than a building)	
a place (e.g. a street, park, garden or natural space)	
a landscape (an area defined by visual features or character, e.g. a city centre, village, suburb or field system)	

2. WHY IS IT INTERESTING? Is it interesting in any of the following ways?	Tick / Rank
Historic interest – a well documented association with a person, event, episode of history, or local industry	√
Archaeological interest – firm evidence of potential to reveal more about the human past through further study	
Architectural interest – an example of an architectural style, a building of particular use, a technique of building, or use of materials	
Artistic interest – It includes artistic endeavour to communicate meaning or use of design (including landscape design) to enhance appearance	
What is it about the asset that provides this interest? Little is known about the history of this building other than the names of the blacksmiths being recorded in 1851 and 1867 and its notation as a “Forge” on an early OS map. Until recently it was still a workshop and store, mainly accommodating small boats.	

3. WHY IS IT LOCALLY VALUED? Is the interest of the asset valued locally for any of the following reasons?	Tick / Rank
Association: It connects us to people and events that shaped the identity or character of the area	√ 2
Illustration: It illustrates an aspect of the area's past that makes an important contribution to its identity or character	√ 1
Evidence: It is an important resource for understanding and learning about the area's history	
Aesthetics: It makes an important contribution to the positive look of the area either by design or fortuitously	
Communal: It is important to the identity, cohesion, spiritual life or memory of all or part of the community	
How is the asset locally valued as heritage? It is the only identified blacksmiths in Southbourne and was obviously well placed to serve passing traffic (horses). It demonstrates the historic importance of the Main Road which has served to connect Chichester to the west since at least Roman times.	

4. WHAT MAKES ITS LOCAL SIGNIFICANCE SPECIAL? Do any of the following features make the heritage significance of the asset stand out above the surrounding environment?	Tick
Age ... Is it particularly old, or of a date that is significant to the local area?	
Rarity ... Is it unusual in the area or a rare survival of something that was once common?	
Integrity ... Is it largely complete or in a near to original condition?	
Group value ... Is it part of a group that have a close historic, aesthetic or communal association?	
Southbourne's identity ... Is it important to the identity or character of the city or a particular part of it? How does this contribute to its value? The building was largely unaltered until 2019 when it was substantially renovated in connection with the building of a new house to the rear.	√