

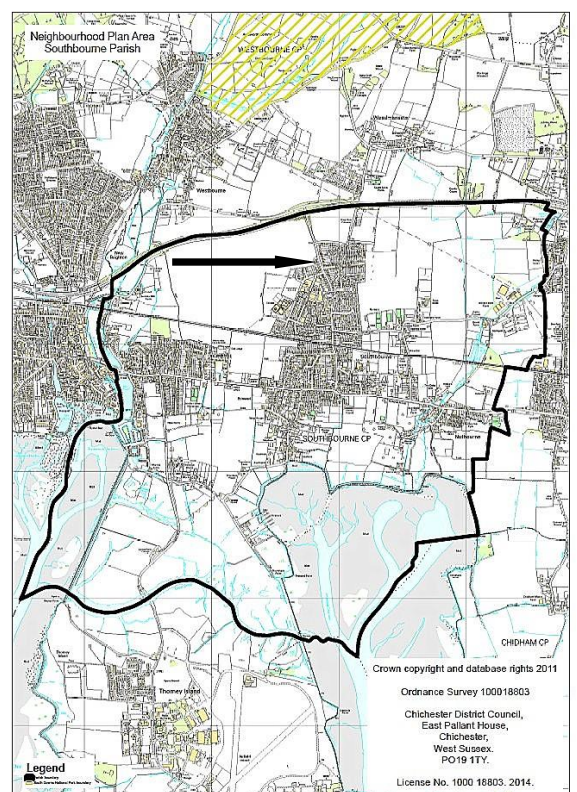
# Nominate a Heritage Asset

Southbourne Parish Neighbourhood Plan  
Local Heritage Assets (SB9.EV6)

Pre-Submission Modified Plan 2014-2029

(September 2022)

No.7 Gingerbread Cottage, 147 Stein Road, Southbourne, PO10 8PN



## Nominate a Heritage Asset

1. <b>WHAT IS IT?</b> Is it one of the following?	Tick
a <b>building or group of buildings</b>	√
a <b>monument or site (an area of archaeological remains or a structure other than a building)</b>	
a <b>place (e.g. a street, park, garden or natural space)</b>	
a <b>landscape (an area defined by visual features or character, e.g. a city centre, village, suburb or field system)</b>	

2. <b>WHY IS IT INTERESTING?</b> Is it interesting in any of the following ways?	Tick / Rank
<b>Historic interest</b> – a well documented association with a person, event, episode of history, or local industry	
<b>Archaeological interest</b> – firm evidence of potential to reveal more about the human past through further study	
<b>Architectural interest</b> – an example of an architectural style, a building of particular use, a technique of building, or use of materials	√
<b>Artistic interest</b> – It includes artistic endeavour to communicate meaning or use of design (including landscape design) to enhance appearance	
What is it about the asset that provides this interest? <b>An attractive thatched cottage. Thought to be named after Gingerbread Farm. A successful local baker who was renowned for his gingerbread is said to have bought the farm and named it after his most profitable product.</b>	

3. <b>WHY IS IT LOCALLY VALUED?</b> Is the interest of the asset <b>valued locally</b> for any of the following reasons?	Tick / Rank
<b>Association:</b> It connects us to people and events that shaped the identity or character of the area	√ 2
<b>Illustration:</b> It illustrates an aspect of the area's past that makes an important contribution to its identity or character	
<b>Evidence:</b> It is an important resource for understanding and learning about the area's history	
<b>Aesthetics:</b> It makes an important contribution to the positive look of the area either by design or fortuitously	√ 1
<b>Communal:</b> It is important to the identity, cohesion, spiritual life or memory of all or part of the community	
How is the asset locally valued as heritage? <b>One of the oldest properties fronting Stein Road and dating from the pre-railway expansion of the village</b>	

4. <b>WHAT MAKES ITS LOCAL SIGNIFICANCE SPECIAL?</b> Do any of the following features make the heritage significance of the asset stand out above the surrounding environment?	Tick
<b>Age</b> ... Is it particularly old, or of a date that is significant to the local area?	
<b>Rarity</b> ... Is it unusual in the area or a rare survival of something that was once common?	
<b>Integrity</b> ... Is it largely complete or in a near to original condition?	
<b>Group value</b> ... Is it part of a group that have a close historic, aesthetic or communal association?	
<b>Southbourne's identity</b> ... Is it important to the identity or character of the city or a particular part of it? How does this contribute to its value? <b>Significant structure which hasn't changed. The date is unknown. It is an attractive feature marking the current northernmost extent of Stein Road.</b>	√