

Nominate a Heritage Asset

Southbourne Parish Neighbourhood Plan Local Heritage Assets (SB9.EV6)

Pre-Submission Modified Plan 2014-2029

(September 2022)

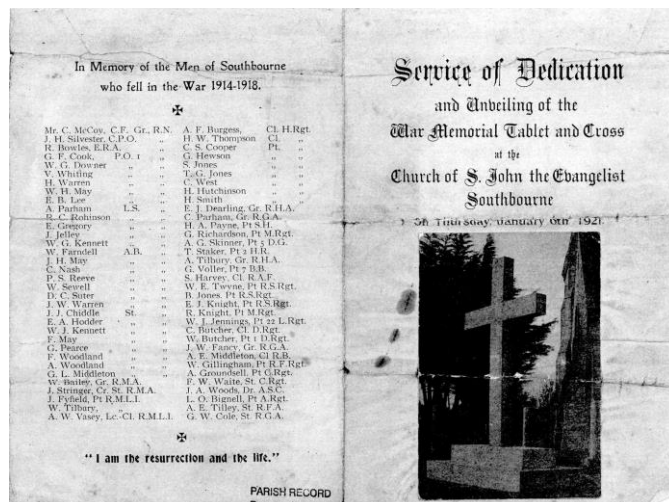
I

No. 8 War Memorials, St John the Evangelist, Main Road, Southbourne, PO10 8LB

Both War Memorials are on St John the Evangelist property. The cross is located on the Green on the corner of Main Road and Stein Road.

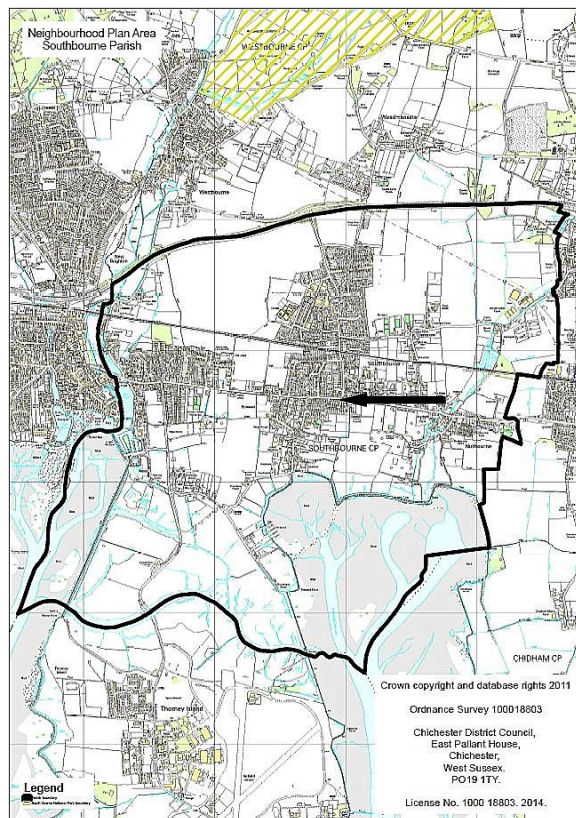


Service of dedication and the unveiling of the Memorial Tablet and Cross held on Thursday 6th January 1921



Southbourne WWI War Memorial

WW2 War memorial Wrought Iron Gates



Nominate a Heritage Asset

1. WHAT IS IT? Is it one of the following?	Tick
a building or group of buildings	
a monument or site (an area of archaeological remains or a structure other than a building)	√
a place (e.g. a street, park, garden or natural space)	
a landscape (an area defined by visual features or character, e.g. a city centre, village, suburb or field system)	

2. WHY IS IT INTERESTING? Is it interesting in any of the following ways?	Tick / Rank
Historic interest – a well documented association with a person, event, episode of history, or local industry	√ 1
Archaeological interest – firm evidence of potential to reveal more about the human past through further study	
Architectural interest – an example of an architectural style, a building of particular use, a technique of building, or use of materials	
Artistic interest – It includes artistic endeavour to communicate meaning or use of design (including landscape design) to enhance appearance	√ 2
What is it about the asset that provides this interest? The WWI memorial cross was funded by an anonymous donor and erected in 1921 when it was dedicated to 70 local men. 20 local men who died in WW2 were added. The Church Gates were commissioned as a memorial to the fallen of WW2. and are an impressive example of craftsmanship.	

3. WHY IS IT LOCALLY VALUED? Is the interest of the asset valued locally for any of the following reasons?	Tick / Rank
Association: It connects us to people and events that shaped the identity or character of the area	√ 1
Illustration: It illustrates an aspect of the area's past that makes an important contribution to its identity or character	
Evidence: It is an important resource for understanding and learning about the area's history	√ 2
Aesthetics: It makes an important contribution to the positive look of the area either by design or fortuitously	
Communal: It is important to the identity, cohesion, spiritual life or memory of all or part of the community	
How is the asset locally valued as heritage? Southbourne was still a very small village in WWI and hadn't grown much more in WW2, as most of the major modern expansion began in the 1950's. The men that were lost mainly came from Slipper, Lumley, Prinsted and Nutbourne. The Ecclesiastical Parish of Southbourne Was not created until 1878 and so the births of these men were recorded at Westbourne. The Civil Parish of Southbourne was created in 1967	

4. WHAT MAKES ITS LOCAL SIGNIFICANCE SPECIAL? Do any of the following features make the heritage significance of the asset stand out above the surrounding environment?	Tick
Age ... Is it particularly old, or of a date that is significant to the local area?	
Rarity ... Is it unusual in the area or a rare survival of something that was once common?	
Integrity ... Is it largely complete or in a near to original condition?	
Group value ... Is it part of a group that have a close historic, aesthetic or communal association?	
Southbourne's identity ... Is it important to the identity or character of the city or a particular part of it? How does this contribute to its value? Relatives of many of the men who are commemorated still live in Southbourne Parish.	√